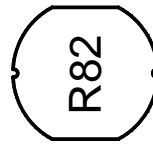
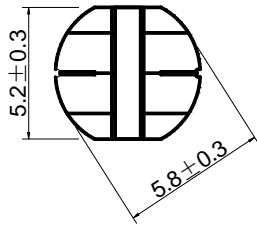


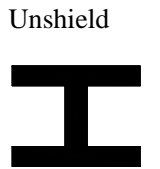
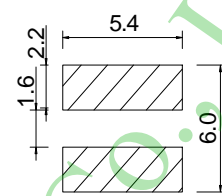
PD52-Series

Inductance Range: 0.82μH~330μH
Temperature Range: -40℃~+125℃

DIMENSIONS(mm)



LAND PATTERNS(mm) CONSTRUCTION



FEATURES:

- ★Quantity / Reel: 2500pcs
- ★Small products, Round 5.8mm, Height 2.5mm Type.
- ★The use of carrier tape package for SMT reflow soldering process
- ★Widely use in DC-DC converter/LCD TV/Notebook/ PDA/MP3 & MP4 player/Digital camera/DVD etc.
- ★Design to customer requirement

RoHS Compliant(SGS CertifPD Result)

Pb	Cd	Cr+6	PBBs	PBDEs	
<1000ppm	ND	ND	ND	ND	

Electrical Characteristics:

Part Number	Test Condition	Inductance (μH)	Tolerance (%)	D.C.R(Ω) Max.	Rated Current(A)
PD52-R82M	100KHz/0.3V	0.82	±20	40m	5.00
PD52-1R2M	100KHz/0.3V	1.2	±20	60m	4.00
PD52-1R8M	100KHz/0.3V	1.8	±20	70m	3.50
PD52-2R2M	100KHz/0.3V	2.2	±20	80m	3.20
PD52-3R3M	100KHz/0.3V	3.3	±20	120m	2.40
PD52-3R9M	100KHz/0.3V	3.9	±20	140m	2.00
PD52-4R7M	100KHz/0.3V	4.7	±20	150m	1.80
PD52-5R6M	100KHz/0.3V	5.6	±20	160m	1.50
PD52-6R8M	100KHz/0.3V	6.8	±20	170m	1.40
PD52-8R2M	100KHz/0.3V	8.2	±20	200m	1.30
PD52-100K,M	1KHz/0.3V	10	±10,±20	230m	1.10
PD52-120K,M	1KHz/0.3V	12	±10,±20	250m	1.05
PD52-150K,M	1KHz/0.3V	15	±10,±20	300m	1.00
PD52-180K,M	1KHz/0.3V	18	±10,±20	350m	0.90
PD52-220K,M	1KHz/0.3V	22	±10,±20	400m	0.85
PD52-270K,M	1KHz/0.3V	27	±10,±20	500m	0.75
PD52-330K,M	1KHz/0.3V	33	±10,±20	550m	0.70
PD52-390K,M	1KHz/0.3V	39	±10,±20	650m	0.60
PD52-470K,M	1KHz/0.3V	47	±10,±20	750m	0.55
PD52-560K,M	1KHz/0.3V	56	±10,±20	950m	0.50
PD52-680K,M	1KHz/0.3V	68	±10,±20	1.20	0.45
PD52-820K,M	1KHz/0.3V	82	±10,±20	1.40	0.40
PD52-101K,M	1KHz/0.3V	100	±10,±20	1.75	0.35
PD52-121K,M	1KHz/0.3V	120	±10,±20	2.00	0.25
PD52-151K,M	1KHz/0.3V	150	±10,±20	2.60	0.22
PD52-181K,M	1KHz/0.3V	180	±10,±20	3.00	0.20
PD52-221K,M	1KHz/0.3V	220	±10,±20	3.70	0.18
PD52-271K,M	1KHz/0.3V	270	±10,±20	4.00	0.19
PD52-331K,M	1KHz/0.3V	330	±10,±20	4.20	0.20

- 1、 Inductance is measured with a LCR meter:HP4284A & 3532-50 or equivalent.
- 2、 D.C .R is measured with a Digital Multimeter TH2512B or equivalent.
- 3、 Rated Current: The rated current is the current at which the inductance decreases by 25% from the initial value or the temperature rise is ΔT=40℃ ,whichever is smaller(Ta=20℃).